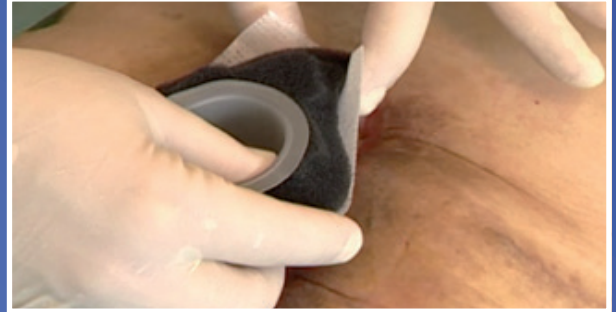


PLV fistula adapter sets

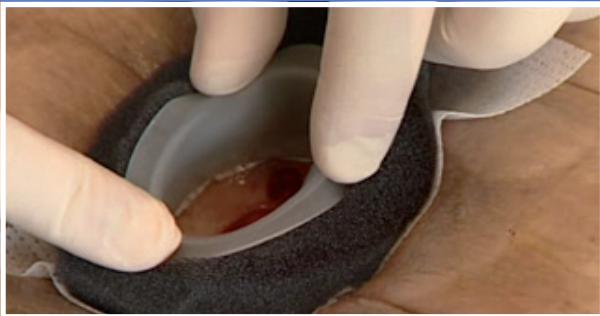
Application:



1. Multiple small intestine fistulae in a "Frozen abdomen"



2. Following cleaning of the wound surface, the size of the fistula and its distance from the wound margin are determined. A silicone dressing and wound foam are then cut to size and furnished with an opening at the measured position for the fistula adapter (narrow rim upwards, broad rim downwards).



3. The components are introduced into the wound together with the opening directly above the fistula. The wound foam should not come into direct contact with the intestines (which is why the silicone dressing and wide edge of the adapter are positioned on the underside).



4. After a PLV film is stuck over the wound foam, a suction connector (PLV port) is applied and the film cut out over the adapter. This images shows a negative pressure bandage employing the bridge technique.



5. Verification of the correct position over the fistula, application of the stoma set and activation of the vacuum.
Disconnecting the suction permits simple emptying and changing of the stoma bag.